



24 DAYS TOUR SOUTHERN AFRICAN SAFARI- 4
COUNTRIES (CAMPING)

www.safariworldtours.com

TOUR DETAILS:

24 Days Tour to safari in 4 southern countries is to visit around the main highlights that South Africa, Namibia, Botswana, and Zimbabwe have to offer in Africa. In just 20 days and 21 nights, we would never be able to fit in everything you wanted to see but you will see the main most attractions. You will spend time amongst the ancient sand dunes in Sossusvlei, Damaraland and from there go back in time with the coastal time of Swakopmund And exceptional game viewing at the world famous Etosha National Park. In Botswana you will enjoy at the watery channels on Okavango Delta, Chobe and ending in the 7 wonders of Victoria Falls.

TOUR HIGHLIGHTS:

- Best nature, wildlife and adventure destinations each one has to offer.
- Visiting the region's essential destinations, such as the iconic Victoria Falls and the world-famous Kruger National Park.
- You will also have the opportunity for a host of other experiences.



TRIP FACTS:

| DESTINATIONS | ACCOMMODATION | NIGHTS | MEALS |
|---------------------------------|------------------------------|----------|-------|
| Cederberg | Marcuskraal Campsite | 1 Night | DBB |
| Orange River | Fiddlers Creek Rest Camp | 1 Night | DBB |
| Fish River Canyon | Hobas Camp | 2 Nights | DBB |
| Sesriem | Sesriem Campsite | 2 Nights | DBB |
| Swakopmund | Skeleton Beach BackpackerS | 1 Night | DBB |
| Twyfelfontein | Madisa Camp | 1 Night | DBB |
| Epupa Falls | Epupa Camp | 1 Night | DBB |
| Ruacana | Ruacana Eha Rest Camp | 2 Nights | DBB |
| Etosha National Park | Halali Campsite | 2 Nights | DBB |
| Windhoek | Urban Camp | 1 Night | DBB |
| Ghanzi | Ghanzi Trail | 1 Night | DBB |
| Maun | Audi Camp | 2 Nights | DBB |
| Nata | Elephant Sands | 1 Night | DBB |
| Chobe River Front | Chobe River Campsite | 2 Nights | DBB |
| Victoria Falls, Zimbabwe | Shearwater Explorers Village | 3 Nights | DBB |

ITINERARY (DAY BY DAY):

DAY 1: CAPE TOWN AIRPORT TO CEDERBERG 198KM

Accommodation: Marcuskraal Campsite

On the first day of the tour guest will be picked up at the airport or Cape town Accommodation and drive to Cederberg. This place is wild, rugged, dramatic and above all, breathtakingly beautiful. The region's valleys are lined with citrus orchards and surrounded by magnificent mountains that become even more spectacular at sunset when they are bathed in an array of vivid colours

Overnight: Marcuskraal Campsite

The newly established Camp Site offers lawn covered terraces, an abundance of trees providing shade and exceptionally neat and clean bathroom facilities. A pool offers respite from the heat during the day. All camp sites are equipped with electrical points. Dishwashing facilities are provided as well as a communal undercover braai

This area can also be setup for as a small conference / meeting venue for Corporate guests on a team-building weekend.

Catered meals can be provided on prior booking.

Marcuskraal would like all visitors to enjoy a relaxing stay and although we strive to keep your visit as informal as possible, noise control rules are however in place to ensure that campers do not become a nuisance to other guests. For the same reason we unfortunately do not allow pets in the camp site.



DAY 2: CEDERBERG TO ORANGE RIVER 498 KM

Accommodation: Fiddlers Creek Rest Camp, Orange River / Similar

This day guest will have early breakfast and drive to cross to the Namibian side as they are approaching Orange river. This place is rising from the beautiful Drakensberg Mountains in Lesotho, forming part of the international border between South Africa and Namibia, the Orange River is the longest river in South Africa. The Orange River Basin extends into Namibia and northern Botswana. The river snakes its way through one of Southern Africa's harshest environments bringing life to an area of sheer rugged beauty. Aside from vineyards in the desert the river also creates a mobile playground from which to explore the area. Upon arrival guest will go on a canoe.

Overnight: Fiddlers Creek Rest Camp

River Rafting specialists, based at our Orange River campsite, Fiddlers Creek, Bushwhacked promises you adventure, fun, relaxation, thrills, awesome scenery, great vibe, fantastic people, brilliant food, mindblowing sunsets, tranquil sunrise's, birdlife, peace and an experience of a life time.

Whether you are looking for a multi day River Rafting experience on the mighty Orange River, a breakaway from the city to relax in your tent at Fiddlers Creek look no further – here is Bushwhacked Outdoor Adventures.

We offer all the amenities of a modern operation, yet set on the banks of the Orange River. Come hear the call of the Fish Eagle and let yourself break free.....

FIDDLERS CREEK CAMPSITE

Nestled on the banks of the mighty Orange River, Fiddlers Creek campsite is an oasis ideally situated for travellers from both South Africa and Namibia.

With 200 metres of waterfront on the river and 14 grassed campsites, Fiddlers Creek is in essence a bush camp but equipped with modern facilities.

Each site has:

Undercover Kitchen

Basins with running water

Counter/Work tops

Lights and Power points (220V)

Some of the larger sites have large tables and benches as a permanent fixture under the roofed area. We all appreciate privacy when we camp, so with that in mind almost all the sites have been enclosed with a reed fence.

Other facilities available at Fiddlers Creek are a small shop, pay-telephone booth, pay-per-coin filtered water, Bar facilities (strictly over 18 only), pool table and volley ball court.

River Rafting excursions available at Bushwhacked ranging from half day to 5 day adventures.

Two Large grass banks on the river front, provide the perfect perch to view the sun setting over the mountain ranges of the Richtersveld. Hot showers and flush toilets which may be considered as a luxury/or necessity to any traveller, but are enjoyed here.

The Catering and Bar area, near the waterfront, is where we prepare and serve all our booked meals. Enjoy a cold beer or whatever grabs your fancy at our "BOZBA-OK" bar, open every night until 23h30. (admission to campers only) Lie back in your tent in the morning and listen to the call of the majestic African Fish Eagle as it flies past.



DAY 3: ORANGE RIVER TO FISH RIVER CANYON 180KM

Accommodation: Hobas Camp, Fish River Canyon / Similar

Guest will get morning Breakfast and depart to Fish River Canyon Carving out an epic rocky wonderland in the south of Namibia, the Fish River has created Africa's largest and the world's second largest canyon. Hot, dry and stony, the Fish River Canyon measures a whopping 160 kilometres in length, at times 27 kilometres in width and 550 metres in depth. The awe-inspiring natural beauty of this ancient geological marvel draws visitors from around the globe. After arrival guest will go on afternoon walking trail to a viewpoint for sunset drinks.



DAY 4 – FISH RIVER CANYON

Accommodation: Hobas Camp, Fish River Canyon / Similar

Guest will wake up at 05h30 to go on a Sunrise Walk where all guests are invited to wrap up the day with a short excursion to a local mountain and get breakfast after arrival. After lunch clients will go on Canyon Drive to explore the Fish River area.

At 18h00 the guide will prepare a delicious dinner for the Guest and then set up a campfire where clients will have the opportunity to talk about their experience and have some stargazing.

Overnight: Hobas Camp

Hobas Camp is the campsite at the start of the hiking trail at the north end of the Fish River Canyon. The camping site at Hobas is one of the few in the area offering shady trees to camp amongst. There are 14 campsites set among shady trees at the top end of Fish River Canyon. Campsite amenities include ablution facilities, braai/BBQ area, swimming pool and a kiosk selling basics and cool drinks.



DAY 5– FISH RIVER CANYON TO SOSSUVLEI / SESRIEM AREA 551.1KM

Accommodation: Sesriem Campsite, Sesriem / Similar

Guest will wake up for early breakfast and drive to Sesriem Canyon, a deep chasm carved through the rocks by water, is a striking natural feature of the area that is best explored on foot. Stony walls rise up sharply on both sides of the canyon, while birds roost in its crags and lizards dart along the ledges. The canyon's name was coined when early settlers used it as a water source, using six lengths of leather ('ses riem – six thongs) tied together to lower buckets into the water at the base of canyon.)



DAY 6– SOSSUVLEI / SESRIEM AREA

Accommodation: Sesriem Campsite, Sesriem / Similar

On the second day at Sossusvlei Area Guest will wake up and have breakfast before going into the Park for Sossusvlei Excursion which includes Dune 45, Deadvlei, Hiddenvlei, and Big Daddy. The tour guide will have regular stops to let clients take pictures and have some exposure of the Dunes. Guest will be back around lunch time and will have some leisure time for themselves at the pool.

Overnight: Sesriem Campsite

At the entry to Sossusvlei is Sesriem Canyon, At the foot of the gorge, which plunges down to 30 to 40 m, are pools that become replenished after good rains. Located perfectly at the entry to Sossusvlei inside the park gate is Sesriem Camping, right beside the gate into the desert and just a short drive from Sesriem Canyon where centuries of erosion have incised a narrow gorge about 1 km in length.

It is perfect for campers who want to experience the beauty of the Namib Desert with the sun setting over the Elim dune then the stars emerging until they fill the sky above you and the clicking of the desert barking Geckos and distant howl of the Jackal. Sit by the fire and imagine what you will.

After a good nights rest its up early (one hour before sunrise) for a drive to the sossusvlei wherer you can climb a sand dune and watch the colours change as the sun rises over the horizon slipping its morning warmth over the Namib desert dunes. Sesriem derives its name from the time when earlier pioneers tied six lengths of rawhide thongs (riem) together to draw water from the pools. Accommodation at Sesriem is provided in 24 campsites. Facilities found there include a gas station, convenience store and a secure parking area.



DAY 7: SOSSUSVLEI TO SWAKOPMUND 346.5 KM

Accommodation: Skeleton Beach Backpackers, Swakopmund / Similar

Guest will eat breakfast and depart to Swakopmund around 12h00 along the beautiful landscape to the coastal side of Namibia. It's about 5 hours' drive to Swakopmund. Once clients have arrived in Walvis Bay and can get lunch then visit the Lagoons in Walvis before proceeding to Swakopmund, When Clients arrive in Swakopmund they will go for their activity (Quad biking). After the activity Other optional activities can be done like Skydiving, Sandwich harbour, kayaking, desert tour.



DAY 8: SWAKOPMUND AREA

Accommodation: Skeleton Beach Backpackers, Swakopmund / Similar

Guest will get early Breakfast and then visit to the Museum and from there onwards do a City Tour. Then have leisure time to visit craft centres and do some shopping in town.

Overnight: Skeleton Beach Backpackers

Skeleton Beach Backpackers is a budget accommodation establishment that is situated close to the beach and is within walking distance to town.

Accommodation: Madisa Camp, Twyfelfontein or similar

Clients will depart in the morning to Twyfelfontein which is Set in the Kunene Region of northwestern Namibia, Twyfelfontein is a spectacularly scenic area, featuring one of the largest and most important concentrations of rock art in Africa. The name

'Twyfelfontein' translates to 'Fountain of Doubt', which refers to the perennial spring situated in the impressive Huab valley flanked by the slopes of a sandstone Table Mountain. Upon arrival clients will visit to the White Lady Paintings.

Overnight: Madisa Camp

Madisa Camp is situated on the D2612 road to Twyfelfontein, a very popular route. The camp is hidden between amazing rock formations which are scattered with Bushman Paintings and has privy to an ancient Desert Elephant route that often gets visited by these beautiful giants.

Each spacious campsite has an exquisite view of the Gauntegab River bed and rock formations. The campsites have individual ablution facilities situated on stilts hidden in the tree tops. The braai facilities also double up as a heater (donkey system) for hot running water at each open air shower.



DAY 9: TWYFELFONTEIN TO OPUWO 601 KM

Accommodation: Epupa Camp

Clients will have breakfast and visit to Palmwag You will see some wildlife on your way to Palmwag lodge in Kookoland. This is Black Rhino area and you may see some and other wildlife like Zebra, Springbok, Kudu, Giraffe etc then proceed to Opuwo. Opuwo, meaning 'the end' in Herero, lies in the north western Kunene region of Namibia. It serves as the capital of the region and is known as the gateway to the magnificent Epupa Falls. The surrounding landscape is characterised by low-lying hills, and vast dry desert plains inhabited by a wealth of desert-adapted wildlife. It serves as the central hub for the Himba culture.

Overnight: Epupa Camp View iBrochure

Epupa Camp offers you a relaxing yet exhilarating few days of personalised service and excellent meals in the seclusion of a lush riverine wilderness of ana trees, wild figs, makalani palms and baobabs.

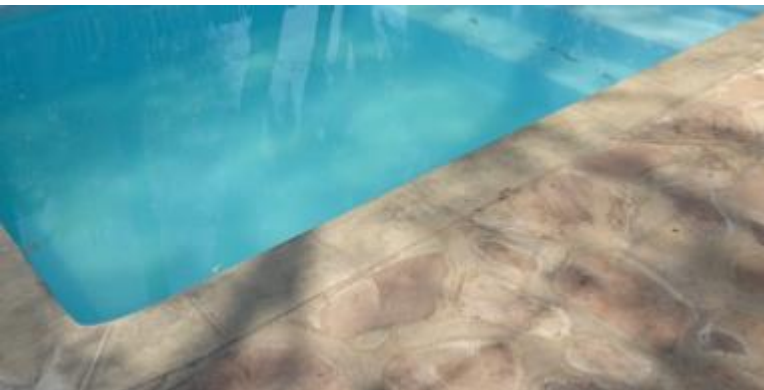
We are situated on the southern bank of the Kunene River, from which the Kunene Region in the northwest of Namibia, takes its name. Epupa Falls, acclaimed by many international travel writers as a must-see tourism destination, is about as far north as you can drive in Namibia.

Epupa Camp offers three kinds of accommodation, namely tented rooms, self-catering tented-campsites and traditional campsites, where you do the do-it-yourself-roughing-it, or the city-sleeker caravan or rooftop camping.

The ten comfortable safari-style tents consist of eight twin tented rooms, one honeymoon tented room with a queen-sized bed and a four-bed family tented room, all with en suite bathrooms. The tents have electrical lights and mosquito netting at the windows and doors. Shaded patios in front of the tents overlook the Kunene River on its flow to the Atlantic Ocean.

Apart from our private island and swimming pool with a river view, our facilities include an outdoor bar with free wifi, lounge with small library and dining room.

Activities include guided cultural tours, sundowner drives, rafting on the Kunene River and several nature walks.



DAY 10: - OPUWO TO RUACANA 318KM

Accommodation: Ruacana Eha Lodge, Ruacana or similar

Clients will grab a nice breakfast, freshen up and drive to Ruacana which is Situated in Namibia's Omusati Region, near the border with Angola on the banks of the river Kunene, the town of Ruacana is famous for its enthralling Ruacana Falls, and its power station. In the rainy season, the falls can rival Victoria Falls for their majesty. Angola's Caueque Dam and NamPower's Ruacana Power Plant lie just upstream. The falls lie at the border, so to visit them, travellers must temporarily leave the country and enter Angola's territory by signing an immigration register. After arrival clients will check in and have leisure time around the lodge.



DAY 11: RUACANA AREA

Accommodation: Ruacana Eha Lodge, Ruacana or similar

This morning clients will grab early breakfast and depart via Ruacana Waterfalls into the Kaokoland. Travel all along the Kunene river. Make numerous stops to see the Himba people living near the river. Travel via Okonguati to Epupa to arrive by noon. Check in at this oasis on the banks of the Kunene river, which forms the border with Angola, the neighbouring country to the North. Guest will do a walking trail to the falls during the afternoon.

Go on top of the hill (viewpoint) to see the river and falls from above and enjoy a sundowner for great photos. See many Himba people near the lodge.

Overnight: Ruacana Eha Rest Camp

Located in Kunene, Namibia, Ruacana Eha Rest Camp offers guests a lovely camping experience amidst lush greenery. The establishment features 15 campsites, suitable for two tents each, and equipped with private lawns, barbecue facilities and power points. Shared ablution facilities are available. Activities include walking trails to a rock pool, sundowners and excursions to attractions such as Ruacana Falls, Ruacana Hydro Power Station, Himba Village and Witsand.



DAY 12- RUACANA TO ETOSHA NATIONAL PARK 413KM

Accommodation: Halali Campsite, Etosha National Park / similar

Clients are pick up in the Morning at 09:00 am and depart to Etosha and on arrival clients will get lunch and after Lunch, if time permits, enter Etosha for an afternoon game drive. Depending on how often you stop today, On entering the park, the first stop would be Okaukuejo where you pay your entry fee and I suggest you pop in at the local shop to purchase some drinks and snacks and most importantly, a map of Etosha which will show you all the waterholes along the way. Etosha has lions, giraffes, rhinos, zebras, springbok and elephants. This on top of many lesser and common plains herds, and abundant birds makes game viewing in Etosha.



DAY 13- ETOSHA NATIONAL PARK AREA

Accommodation: Halali Campsite, Etosha National Park / similar

Clients will take early breakfast and then go on the Full day game drive and around 12h00 -13h00 clients will have lunch inside the park and continue with the game drive up till the afternoon and after the game drive guest will have leisure time to enjoy the atmosphere before dinner.

Overnight: Halali Campsite

In an otherwise flat area Halali Campsite is perched between a few hills and koppies. Thicker vegetation makes this popular with leopard, rhino and elephant. Situated halfway between Namutoni and Okaukuejo, the Halali Campsite is centrally located in close proximity of some of the most popular waterholes of the Etosha National Park. A short walk will take you to the camp's floodlit waterhole with excellent day and night game viewing.

'Halali' is the German word for the traditional ending of a hunt. The campsite signifies the end of game hunting and the rise of eco-tourism in Namibia. Halali offers active guests the largest pool in the park and its strategic location between Namutoni and Okaukuejo makes it a great stopover for lunch, ice cream, a cool drink or just petrol.



DAY 14: ETOSHA NATIONAL PARK TO WINDHOEK 501.2KM

Accommodation: Urban Camp, Windhoek / Similar

Guest will have a nice breakfast and head off to Windhoek which is situated in Central Namibia, the cosmopolitan city of Windhoek serves as the capital of the country. It is home to an international airport and a plethora of restaurants, shops, entertainment venues and accommodation options. The city is clean, safe and well-organised, with a colonial legacy that is reflected in its many German eateries and shops, and the widespread use of the German language. Upon arrival guest will go on a City Tour then after the activity there are other optional activities that can be.

Overnight: Urban Camp

Urban Camp is a centrally located comfortable camping ground situated in the heart of Windhoek. It is the perfect get away with all the convenience of being in town. Big shady trees, Wi-Fi internet, nice bathrooms and a sparkling pool – will get you WINDHOOKED. It is a mere 5 min walk to the legendary Joe's Beerhouse or a good Portuguese restaurant. For added convenience, you will find a small shopping centre with a bank, ATM, post office, supermarket, pharmacy, 24 hr fuel station, car wash, butchery, café etc. – all just around the corner.

And if you really are in a sightseeing mood – its easy from our grounds, as it is just a stone-throw away from the city centre and most attractions.



DAY 15: WINDHOEK TO GHANZI 517 KM

Guest will have breakfast and drive to their next destination, as they are passing by Gobabis which is the next town, guest will have the opportunity to buy lunch packs or get lunch in that town before crossing the border to Botswana Ghanzi which is situated 300 kilometres southwest of Maun and just north of the Trans-Kalahari highway, which runs from Lobatse in Botswana to Walvis Bay in Namibia, the small town of Ghanzi is sometimes referred to as the 'Capital of the Kalahari'. It serves as the administrative centre of the Ghanzi district which covers a vast area of cattle ranches and farmland in the west of Botswana. After checking in guest will visit the San Village

Overnight: Ghanzi Trail Blazers

Ghanzi Trail Blazers caters for visitors who wish to have a genuine glimpse of a fast disappearing unique and ancient culture. It offers a number of activities to interact with the San Bushman, and to discover how they survived in the Kalahari. Ghanzi Trail Blazers is located approximately 5.6 km away from the main road, far enough away to capture the real African bushveldt.



DAY 16: OKAVANGO RIVER TO OKAVANGO DELTA 317 KM

Accommodation: Audi Camp, Okavango Delta / Similar

Guests will grab a nice breakfast in the morning and then drive to Okavango Delta. Situated in the north-western corner of Botswana, the Okavango Delta is a World Heritage Site as it is the largest inland delta in the world. The magnificent Okavango River sprawls out over the dry sands of the Kalahari Desert forming this flourishing waterlogged oasis featuring countless meandering waterways and crystal-clear lagoons studded with water lilies, as well as fertile floodplains and reeded islands inhabited with abundant wildlife.

After checking in and freshening up In the Afternoon the guest will have leisure time around the lodge.



DAY 17: OKAVANGO DELTA AREA

Accommodation: Audi Camp, Okavango Delta / Similar

Clients will grab early Breakfast and then go on a Full Day Okavango Excursion the game drive. And will be back in the afternoon.

Overnight: Audi Camp

Audi Camp is situated at the edge of the Okavango Delta 12 km away from Maun, on the road toward the Moremi Game Reserve. It is located on the banks of the Thamalakane river, the southern most tributary of the Okavango Delta. Audi Camp offers camping, tented accommodation and en suite tents. The camp has an a la carte restaurant, a bar and pool and can also cater for a wide variety of activities in and around the Okavango Delta including, cultural and community based trips.



DAY 18: OKAVANGO DELTA TO NATA 364 KM

Accommodation: Elephant Sands Lodge, Nata / Similar

Clients will grab early Breakfast and depart to Nata which is situated 180 kilometres north of Francistown, the small village of Nata is a popular stopover between Maun and Kasane along a road known as the 'game drive route' as there is often a chance to catch a glimpse of wildlife along the way. The unique landscape that surrounds the area around Nata features white sand, tall termite mounds and the Mokolwane palm trees.

Overnight: Elephant Sands Lodge

Elephant Sands is a bush lodge & campsite in the north-eastern part of Botswana.

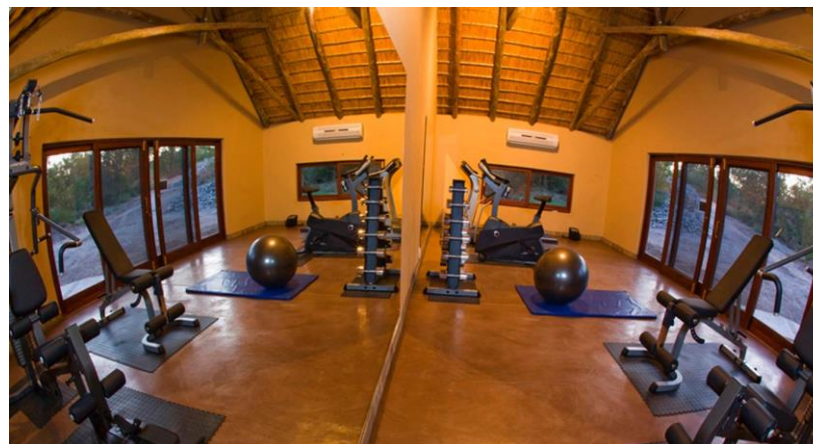
Come and enjoy viewing the elephants at our natural waterhole right in front of the lodge. Watch these impressive creatures whilst they drink at only a couple of meters away from you, a unique experience!

There is plenty of other wildlife around as well on our unfenced 16000 ha private conservancy. The lack of fences allows all animals to roam freely.

We are ideally located in the centre of Botswana's highlights, such as: the Makgadikgadi pans, the Okavango delta and Chobe National Park. Victoria Falls and Hwange National Park are on our doorstep so to speak.

Our lodge is a great starting point for a tour along all these places of interest. Find out more about the activities and personalized Tours & Safaris we offer. Stay in one of our 14 en suite Chalets or pitch your own tent and experience the serenity and peacefulness of the real African bush.

Elephant Sands, where elephants rule...



DAY 19: NATA TO CHOBE 314 KM

Accommodation: Chobe River Campsite Gondwana Collection, Chobe River Front / Similar

Clients will have a game drive Chobe to Kasane throughout its beautiful landscape across the challenging Magwike Sand point, which was the shoreline of the ancient inland sea, visit the Makgadikgadi Lake. Its deep sand, so in the wet season, it becomes impassable. Kasane is Tucked away in the northeastern corner of Botswana, on the banks of the famous Chobe River, the scenic

little town of Kasane rests on the doorstep of the spectacular Chobe National Park. There are no boundary fences separating the village from the park and game such as elephant and hippo are often spotted roaming around the town. If on the lookout for elusive game, pay a visit to the Sedudu Valley Road, where large dead trees provide temporary homes for leopards. After arrival clients will check in and prepare for dinner.



DAY 20: CHOBE NATIONAL PARK AREA

Accommodation: Chobe River Campsite Gondwana Collection

Clients will have breakfast in the morning and then go on the Mokoro trial excursion. The mokoro usually carries one or two passengers, while the boatman stands at the stern using a long pole called a "ngashi", to pole or push the mokoro forward.

Overnight: Chobe River Campsite Gondwana Collection

Gaze over the flood plains and enjoy luxurious solitude on the banks of the Chobe River. Assuring extraordinary experiences, we offer 20 luxury tented chalets.

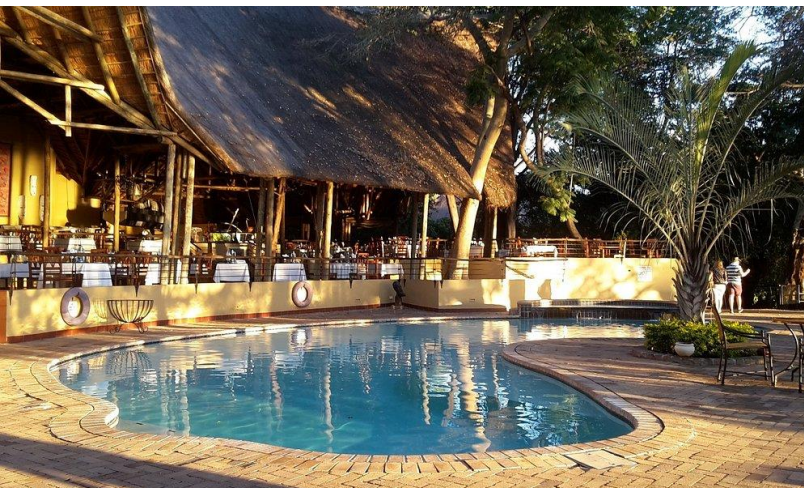
The lodge was inspired by the natural beauty of the landscape and all chalets have been constructed using indigenous Mopane timber and canvas. This offers not only a stunning sight, but an environmentally conscious design.



DAY 21: CHOBE TO VICTORIA FALLS 142 KM

Accommodation: Shearwater Explorers Village Campsite, Victoria Falls, Zimbabwe/ Similar

Clients will depart from Kasane to Victoria Falls which is in the largest water Fall in the world Resting on the southern banks of the Zambezi River at the western end of the eponymous falls, this popular tourist town is compact enough to walk around and makes an ideal base for travellers exploring the seventh wonder of the world, the unfathomably vast Victoria Falls. After arrival clients will go visit the Craft centre and get back for dinner.



DAY 22: VICTORIA FALLS AREA

Accommodation: Shearwater Explorers Village Campsite, Victoria Falls, Zimbabwe / Similar

Guest will wake up to a nice breakfast at the hotel and get ready to be picked up for the Guide Tour of the Falls. The Tour Starts at 'the Big Tree', an old Baobab located in Victoria Falls National Park. Botanists believe the tree is over 1,000 years old. Guest will be blown away by this magnificent wonder as you walk for 2km viewing all the 16 points that take you closer to the edge as you view the mighty Zambezi dropping for more than 100m at the Falls. After lunch guest will have leisure time to do extra activities or enjoy around the hotel.



DAY 23: VICTORIA FALLS AREA

Accommodation: Shearwater Explorers Village Campsite, Victoria Falls, Zimbabwe / Similar

Guest will have breakfast than today have leisure time to relax around the campsite or do other optional activities.

Overnight: Shearwater Explorers Village

Located merely 400m from the Victoria Falls, 100m from the epicenter of the Victoria Falls town with its craft and craft & curio markets, bohemian cafes and overlooking a natural African bush panorama the Shearwater Explorers Village is the perfect "Base Camp".

Comprising of 5 bespoke Overland camping sites modern ablution facilities and 16 private chalets, the Village represents affordable accommodation at its finest – clean, cool, relaxing, elegant, excellent traditional food, ice cold drinks and exceptionally friendly hosts ready to welcome you and guide you through your Victoria Falls experience.



DAY 24: VICTORIA SHERWATER VILLAGE TO VICTORIA FALLS AIRPORT (21.1 KM)

This is the last day of the tour, guests will refresh and pack up in the morning and depart after breakfast to the Airport.



INCLUDE:

- Qualified professional driver guide
- Vehicle / fuel
- Park entrance fees as per itinerary
- Passenger liability 15%
- VAT 2% tourism levy
- Airport transfers
- Accommodation
- Breakfast and Dinner for the Client
- Items not mentioned in the itinerary

EXCLUDE:

- Expenses of personal nature
- Entrance fees not mentioned in the itinerary
- Meals not mentioned
- Drinks at lodges and on road
- Optional excursions and activities
- Tips for tour guides
- International flights and airport taxes

HOW TO BOOK AND HOW TO PAY:

To reserve this tour, a payment of 30% of the total price must be made at the time of reservation. The balance of 70% can be made 30 days before the departure of your tour. Your deposit can either be made through a Bank Transfer, with the addition of a 45 US Dollar fee or by Credit Card which incurs an additional bank charge of 3.5%